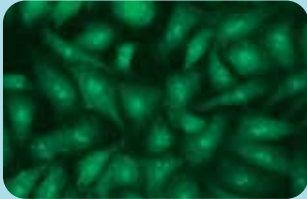


SUBSTRATES OVERVIEW

ANA HEp-2 cells


Cytoplasmic Jo-1 like Nucleoplasm coarse speckled

nDNA Crithidia luciliae cells





Kinetoplast positive Kinetoplast negative

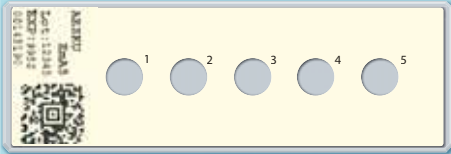
ANCA Granulocytes



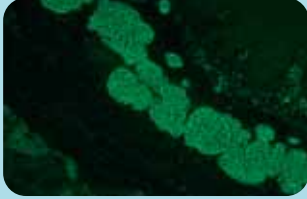
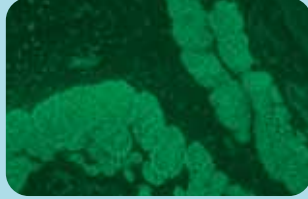


P-ANCA Ethanol C-ANCA Formalin

EMA Primate Oesophagus

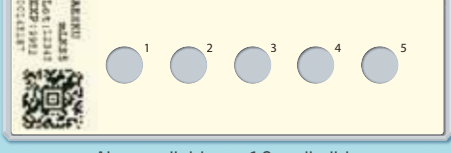


Also available as 10 well slide






IgA Endomysium positive IgG Endomysium positive

AMA/ASMA/APCA LKS (rat, mouse)



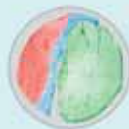
Also available as 10 well slide
Double tissue KS available on request

AMA like pattern on kidney Parietal cell positive

Triple tissues are available in two different formats:

Separated - where the **liver**, **kidney** and **stomach** can be found in separated tissue sections.



Wrapped - where the **liver** and the **kidney** are wrapped with **stomach**.