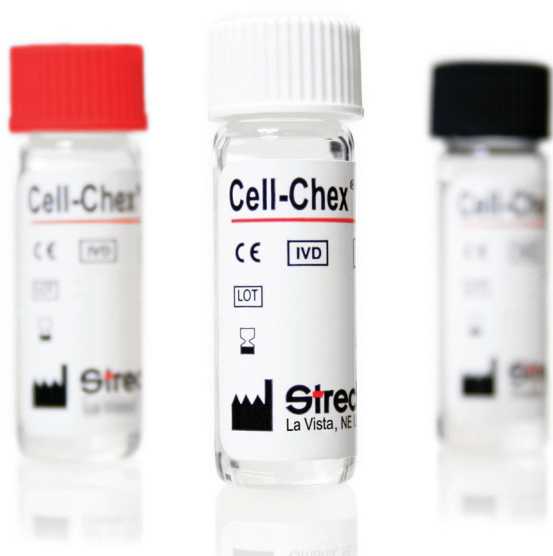


Cell-Chex[®]

A body fluid procedural control for RBC and WBC counts, crystal identification and white blood cell differentiation.



Manual Cell Count Control

Cell-Chex is a multi-level manual body fluid control that allows the clinical laboratory to verify the accuracy of hemacytometer cell counts, urate and CPPD crystal identification and manual WBC differential procedures.

5-Part Differential

The white blood cells in Cell-Chex are human to better resemble patient samples. When stained in the same manner as a patient sample, the technologist can differentiate granulocyte, lymphocyte and monocyte populations. The differential assay offers polymorphonuclear and mononuclear values and 5-part white cell differential values. Cell-Chex is a control appropriate for all body fluids.

Stability

Closed-vial stability	6 months
Open-vial stability	30 days

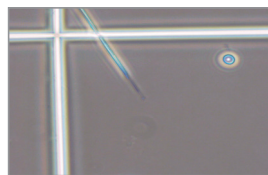
STATS[®]

Streck's interlaboratory quality control program provides customers with evaluations of their instrument's performance against a peer group comprised of other labs using the same instrument or method and product lot. The program, open to all customers at no charge, includes personalized, easy-to-read reports that detail performance, identify trends and facilitate prompt corrective action. Additional information can be found at streck.com.

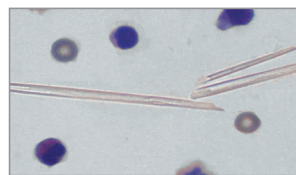


The brand and product names of the instruments are trademarks of their respective holders.

Cell-Chex has Urate Crystals (L1-UC) and CPPD Crystals (L1-CC)



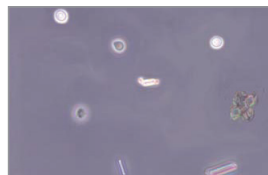
L1-UC Hemacytometer



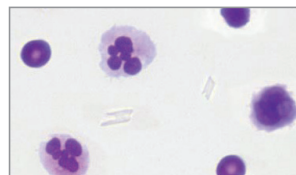
L1-UC Cytocentrifuge



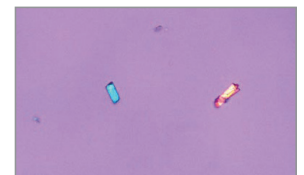
L1-UC Polarizing Scope



L1-CC Hemacytometer



L1-CC Cytocentrifuge



L1-CC Polarizing Scope

Crystals can be easily identified without interfering with RBC and WBC counts using a hemacytometer or WBC differential counts using a cytocentrifuge smear.

Typical assay values

Level 1 (WBC, RBC)/ μ L	10
Level 2 (WBC, RBC)/ μ L	100
Neut %	75
Lymph %	15
Mono %	6
Eos %	3
Baso %	1

* Urate crystals in Level 1-UC

* CPPD crystals in Level 1-CC

Level

Level	Description	Catalog #
L1-UC, L1-CC, L2	3 x 2.0 mL	212431
L1-UC, L2	4 x 2.0 mL	212420
L1-UC, L2	12 x 2.0 mL	212425
L1-CC	2 x 2.0 mL	212429
L1-CC	6 x 2.0 mL	212430
L2	6 x 2.0 mL	212424
L1-UC	6 x 2.0 mL	212432

800.843.0912
streck.com

Streck
Clinical Laboratory Products You Can Count On.