



# Bordetella pertussis PT IgG EIA

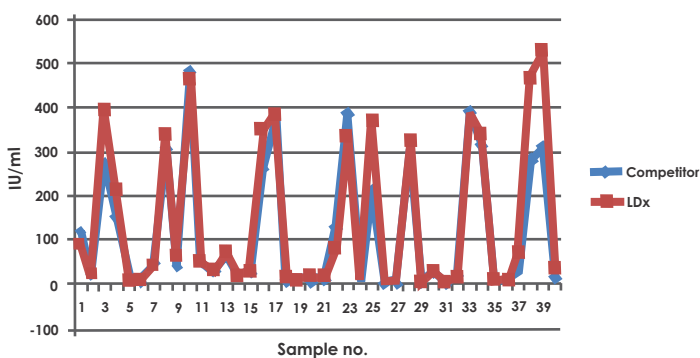
**Bordetella pertussis** is a pathogenic organism with multiple biological activities, and the cause of whooping cough. The infection starts when the pathogen attaches to the ciliated epithelium of the respiratory tract of its host and produces different kind of aggressins and toxins that are important for the colonization of the host and for its survival and propagation. One of those is the important virulence factor pertussis toxin (PT), the main and unique toxin of the *B. pertussis*.

**Bordetella pertussis PT IgG EIA** assay uses pertussis toxin (PT) as antigen, as recommended by the European ECDC guidelines, and it is calibrated against the WHO standard.

The protocol is similar to Labsystems Diagnostics' *Mycoplasma pneumoniae* and *Chlamydia pneumoniae* IgG, IgA and IgM tests so they can be determined from the same prediluted sample using corresponding Labsystems Diagnostics' kits.

The kit comes with ready-to-use reagents, and it includes calibrators to give semi-quantitative results. The strips are coded for identification.

LDx B.pertussis PT IgG EIA Vs Competitor B.pertussis PT IgG



Comparison between Labsystems Diagnostics' (LDx) B.pertussis PT IgG EIA and a similar test from a competitor.

**Procedure for B.pertussis PT IgG EIA**  
 Dilute the specimen into the sample diluent 5 µl+500 µl (1:101)

**Pipette 100 µl of diluted samples/ready-to-use calibrators and control**

- Incubate for 1 hour at 37 °C
- Wash
- Add 100 µl conjugate
- Incubate for 1 hour 37 °C
- Wash
- Add 100 µl substrate
- Incubate for 30 minutes at RT in dark
- Add 100 µl stopping solution
- Read at 450 nm

Product code : 6111530, 96 wells

**Labsystems Diagnostics Oy**

Tiilitie 3, FI-01720 VANTAA, Finland Tel: +358 (0) 20 155 7530

Email: sales@labsystemsdx.com

Web: www.labsystemsdx.com