

Vasculitis is a group of diseases featuring inflammation of the wall of blood vessels due to leukocyte migration and resultant damage. While most vasculitides are rare, they generally affect several organ systems and can cause severe disability.

PR-3

There is a strong association between anti-PR3 antibodies and Wegener's granulomatosis. Specificity has been found of 95-98%. Sensitivity depends on the phase and the activity of the disease, and has been found around 90% for expanded Wegener's granulomatosis (i.e. with necrotizing glomerulonephritis, systemic vasculitis and granulomatous inflammation of the respiratory tract), and around 75% for limited Wegener's granulomatosis (i.e. without renal involvement).

MPO

High levels of anti-MPO antibodies are found in 65% of patients with idiopathic necrotizing glomerulonephritis, 60% of patients with Churg-Strauss syndrome, 30-40% of patients with Goodpasture's syndrome and 10% of patients with Wegener's granulomatosis. Specificity for systemic vasculitis and idiopathic necrotizing glomerulonephritis goes up to 95%.

ANTI-NEUTROPHIL CYTOPLASM ANTIBODIES (ANCA)

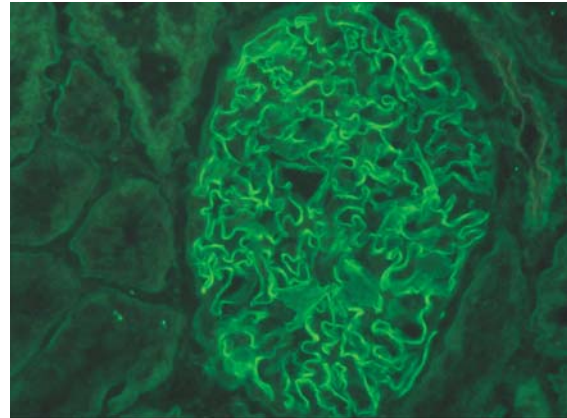
- 44850** Ethanol fixed, IFA Complete kit, 4 slides x 6 wells
- 44851** Ethanol fixed, IFA Complete kit, 10 slides x 6 wells
- 44852** Ethanol fixed, IFA Slide Box, 10 slides x 6 wells
- 44878** Formalin fixed, IFA Slide Box, 10 slides x 6 wells
- 44898** Formalin fixed, IFA Complete kit, 10 slides x 6 wells

ANTI-PR3 ANTIBODIES (C-ANCA)

- 44791** ELISA 96 T
Purified human antigen

ANTI-MPO ANTIBODIES (P-ANCA)

- 44790** ELISA 96 T
Purified human antigen



Glomerular basement membrane antibodies

Monkey kidney

GBM

Indirect immunofluorescence assay is the conventional method for the determination of anti-glomerular basement membrane antibodies (GBMA). Antibodies to GBM are present in patients with Goodpasture's syndrome. The disease presents a progressive glomerulonephritis with or without massive pulmonary hemorrhage. The finding of GBMA confirms a diagnosis of a life threatening disease that causes loss of kidney, and indicates a grave prognosis. Results obtained in a comparative study do not show significant systematic differences compared to an ELISA for anti-type IV collagen alpha chain antibodies.

ANTI-GLOMERULAR BASEMENT MEMBRANE ANTIBODIES (GBMA)

- 44588** IFA – Slide box, 12 slides x 4 wells
Monkey Kidney
- 44870** ELISA kit 96 T
Highly purified antigen

